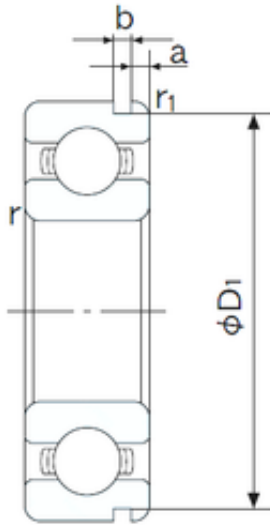




Bearing Rolamentos do Brasil Ltda.



50 mm x 90 mm x 20 mm 22324CC/W33 Spherical Roller Bearing

Bearing No. 6210N

6210N Bearing 2D drawings and 3D CAD models

Size	50x90x20 mm
Bore Diameter	50 mm
Outer Diameter	90 mm
Width	20 mm
d	50 mm
D	90 mm
B	20 mm
C	20 mm
a	3.28 mm
b	2.7 mm
r min.	1.1 mm
r1 min.	0.5 mm
D1	86.79 mm
Weight	0.463 Kg
Basic dynamic load rating (C)	35 kN
Basic static load rating (C0)	23,2 kN
(Grease) Lubrication Speed	7000 r/min
Bore Type	Cylindrical Bore
Enclosure	Open
Configuration	Single Row
Bore Size	50 mm
Outside Diameter	90 mm
Width	20 mm
Fillet Radius/Chamfer	1.1 mm
r1	0.5 mm



Bearing Rolamentos do Brasil Ltda.

Groove Width	2.7 mm
Groove Diameter	86.8 mm
a (max)	3.3 mm
Dynamic Load Rating	35,000 N
Static Load Rating	23,200 N
Limiting Speed - Grease	7,100 rpm
Limiting Speed - Oil	8,600 rpm
Factor fo	14.4
Radial Clearance	0.006 to 0.023 mm
da (min)	57 mm
Da (max)	83 mm
Dx (min)	98 mm
ra (max)	1 mm
Cy (max)	5.4 mm